

This architectural floor plan depicts a multi-level residential building. The plan is divided into several main sections and levels, indicated by numbers 1 through 6.


- Level 1 (Top):** Features a large central area labeled "parkeergarage" (parking garage). To the left, there is a vertical strip of rooms including "ber" (bedrooms), "par" (parking), and "wk/hydro" (work/hydro). A "lift" (elevator) is located near the top left. The right side includes "woning" (apartment) units, "buitenruimte" (outdoor space), and "CVZ" (central vacuum zone) areas.
- Level 2 (Middle):** Contains a large "parkeergarage" area. To the left, there are "ber" and "par" rooms. The right side shows "woning" units, "buitenruimte", and "CVZ" areas. A "lift" is also present.
- Level 3 (Bottom):** Features a large "parkeergarage" area. To the left, there are "ber" and "par" rooms. The right side shows "woning" units, "buitenruimte", and "CVZ" areas. A "lift" is also present.
- Level 4 (Far Bottom):** Includes a "woning" unit, "buitenruimte", and "CVZ" areas. A "lift" is located near the bottom left.
- Level 5 (Far Bottom):** Shows a "woning" unit, "buitenruimte", and "CVZ" areas. A "lift" is located near the bottom left.
- Level 6 (Far Bottom):** Includes a "woning" unit, "buitenruimte", and "CVZ" areas. A "lift" is located near the bottom left.

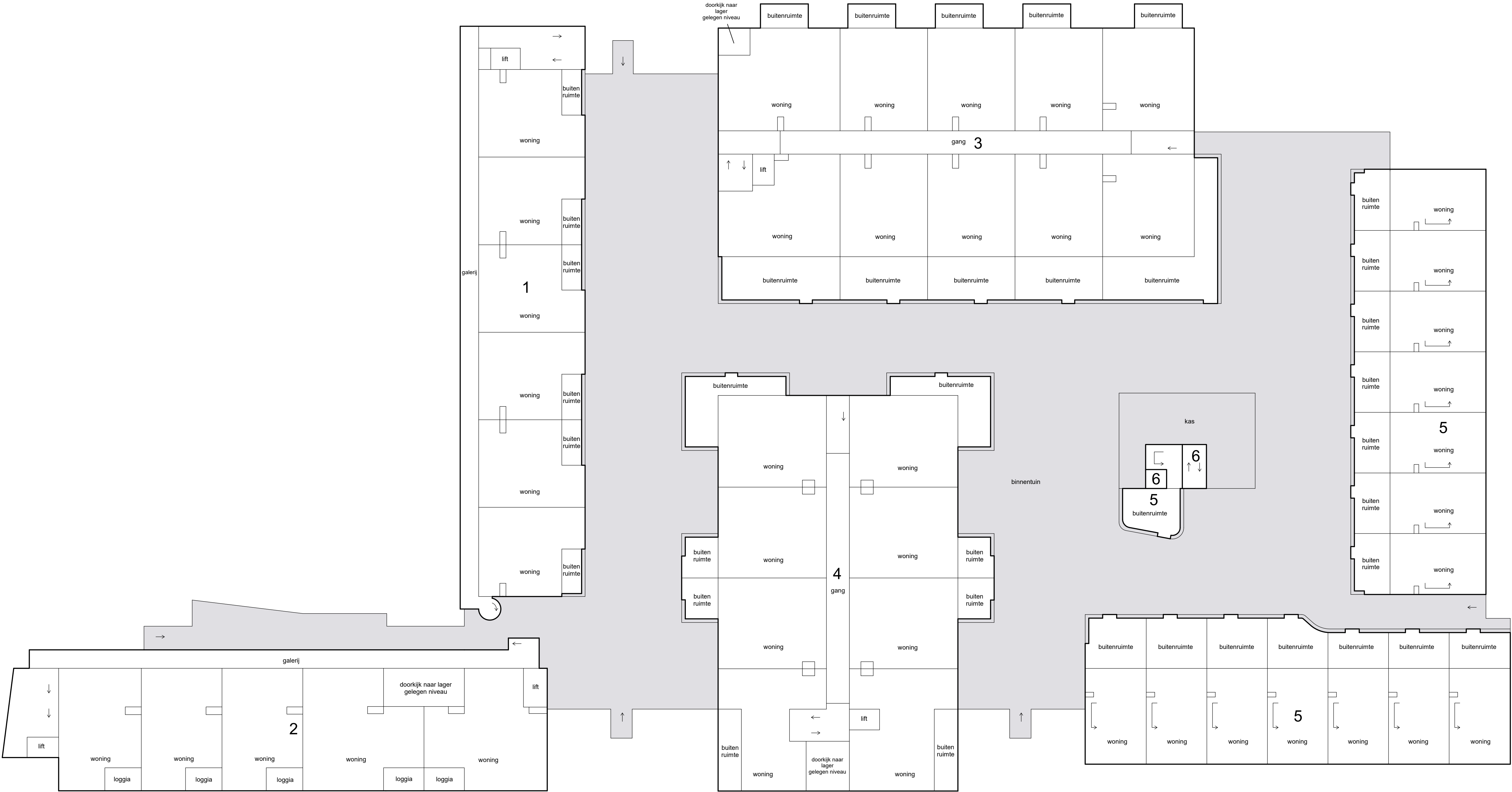
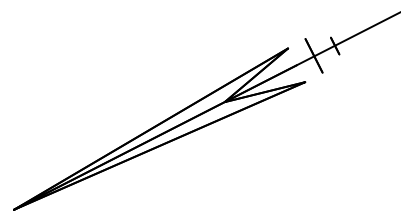
The plan also includes various other rooms and areas, such as "ber" (bedrooms), "par" (parking), "wk/hydro" (work/hydro), "buitenruimte" (outdoor space), "CVZ" (central vacuum zone), "reinwaterkelder" (rainwater tank), "sprinklerpompkamer" (sprinkler pump room), "fietstenstalling" (bicycle storage), "technische ruimte" (technical room), "inkoop" (shopping), "trafo" (transformer), "hvk" (heating/ventilation/cooling), "ber" (bedrooms), "par" (parking), "wk/hydro" (work/hydro), "buitenruimte" (outdoor space), "CVZ" (central vacuum zone), "reinwaterkelder" (rainwater tank), "sprinklerpompkamer" (sprinkler pump room), "fietstenstalling" (bicycle storage), "technische ruimte" (technical room), "inkoop" (shopping), "trafo" (transformer), "hvk" (heating/ventilation/cooling).

A horizontal scale bar with three segments. The first segment is labeled '0m' at its left end. The second segment is labeled '5m' at its right end. The third segment is labeled '10m' at its right end. The segments are separated by vertical tick marks.

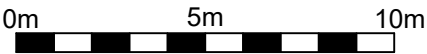
complex De Brandmeesters in Veenendaal
versie 3 december 2025

Schaal 1 : 200


 = Gemeenschappelijk
Tekening bestaat uit 8 bladen
Blad 2

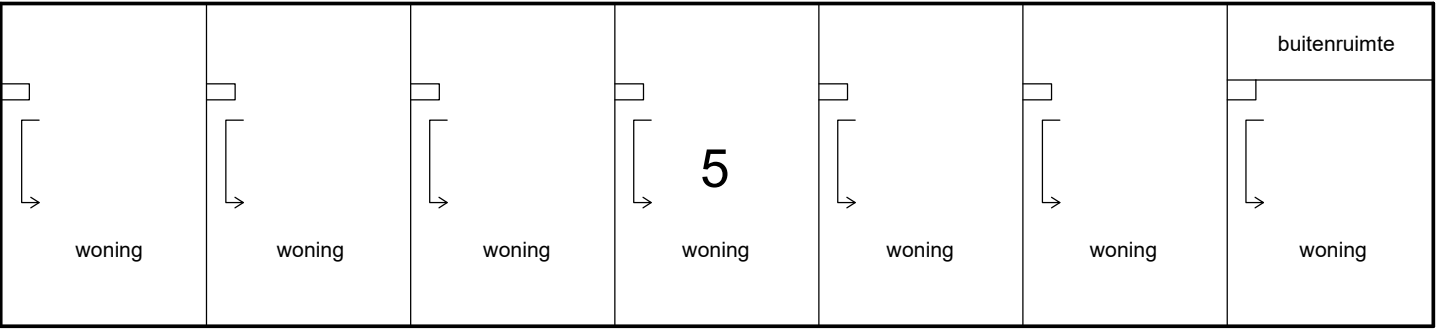
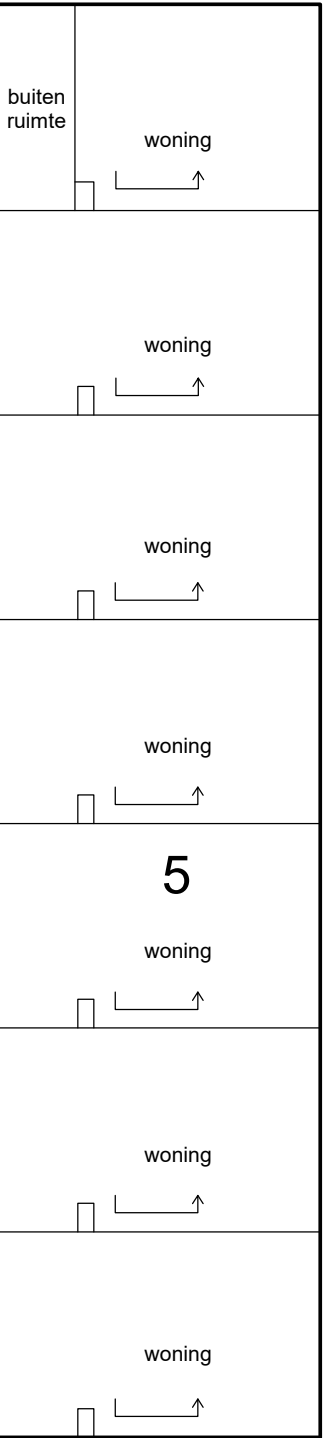
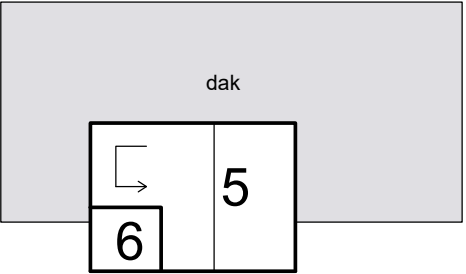
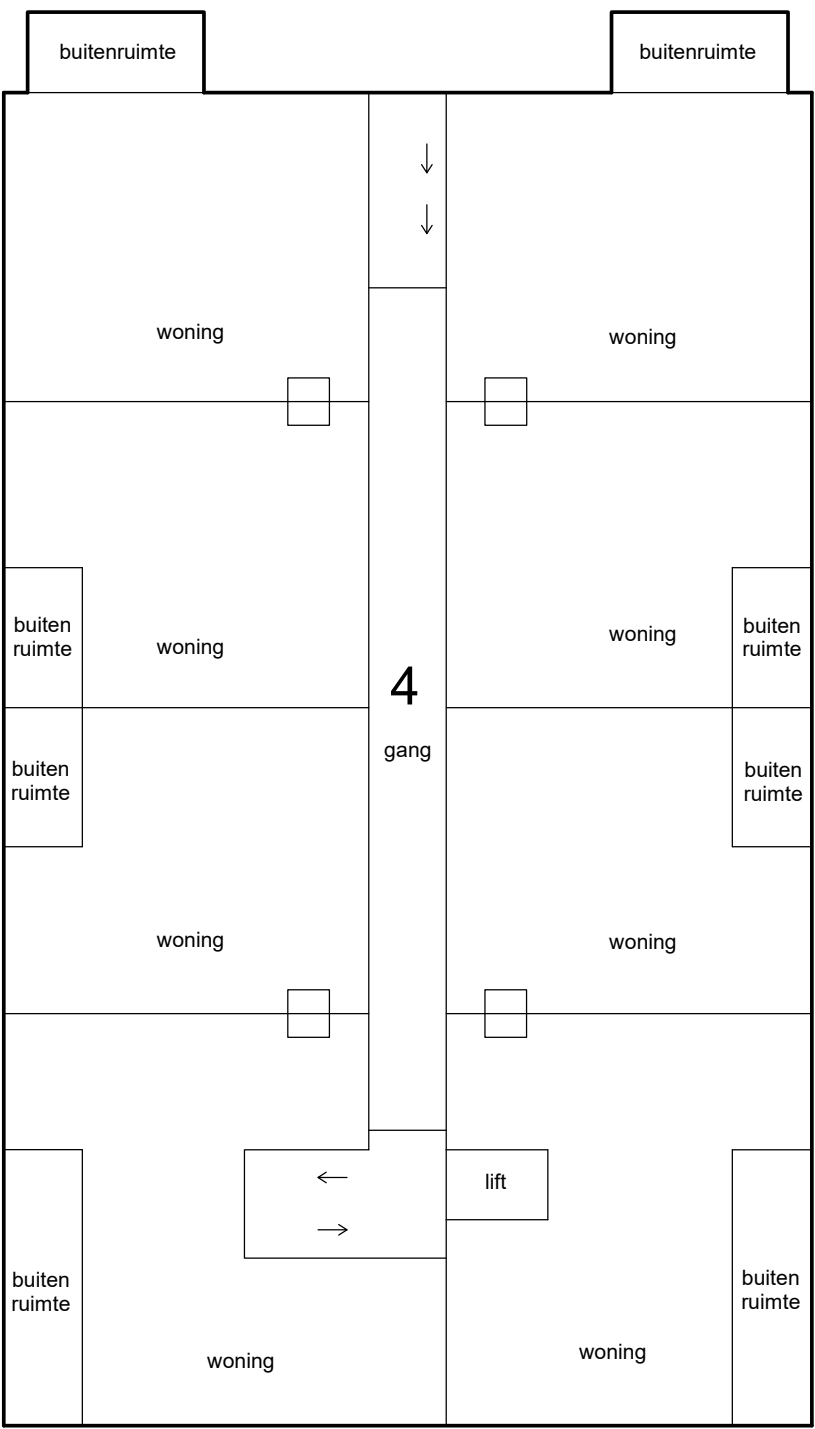
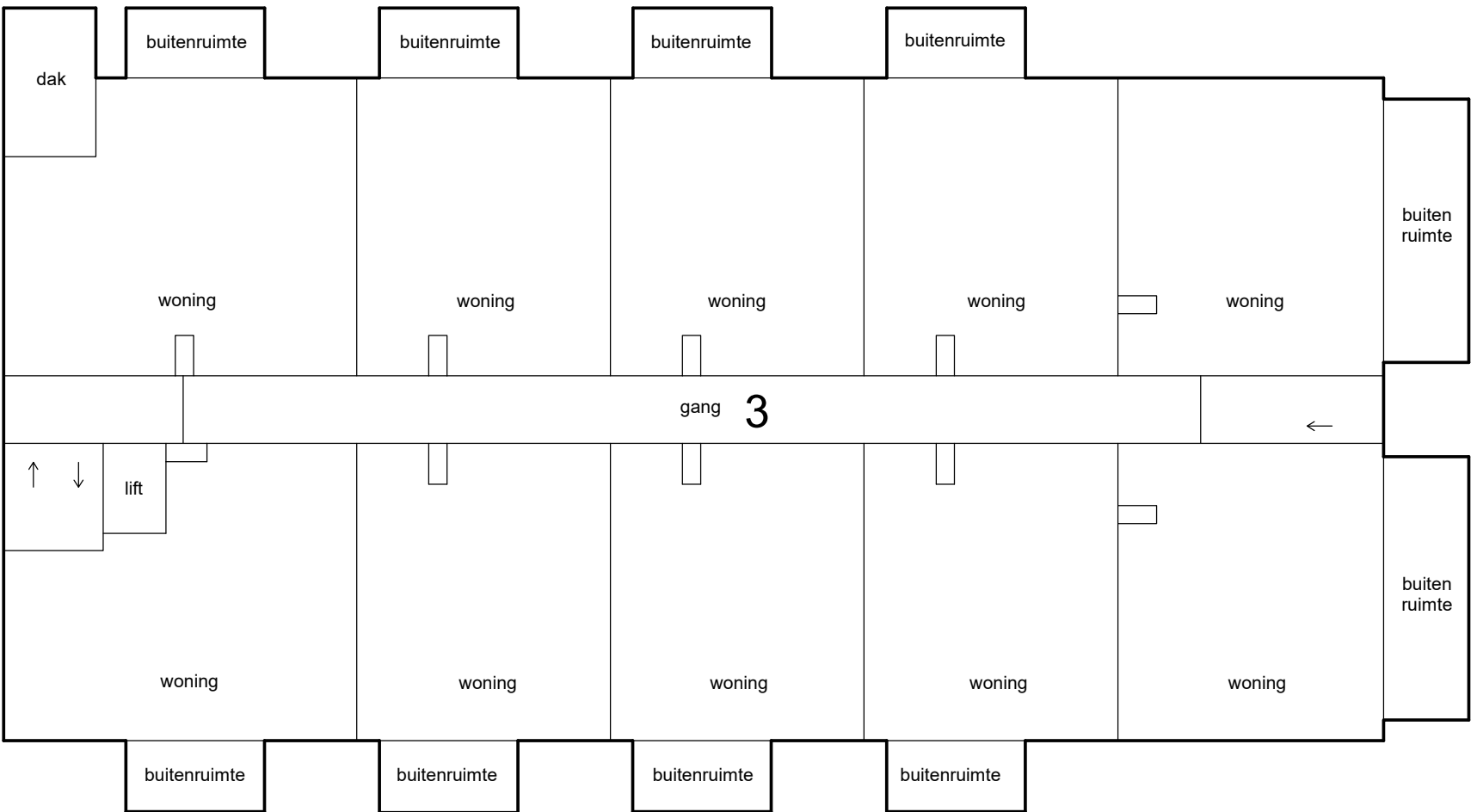
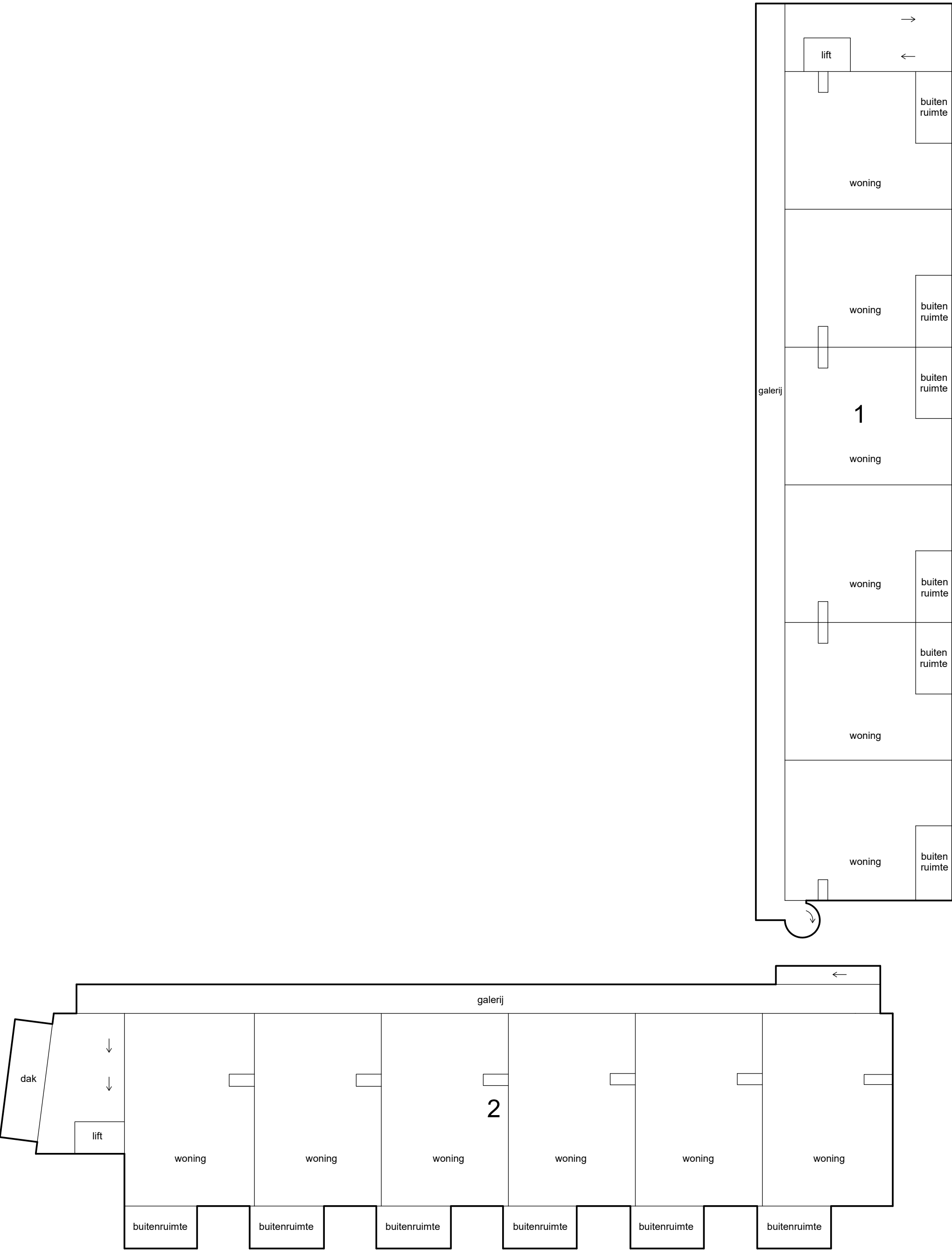
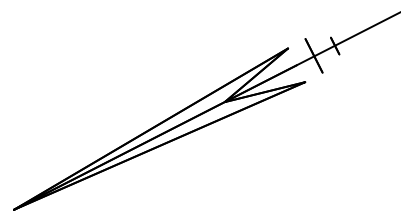


1e etage



Schaal 1 : 200

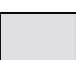
 = Gemeenschappelijk
Tekening bestaat uit 8 bladen
Blad 3

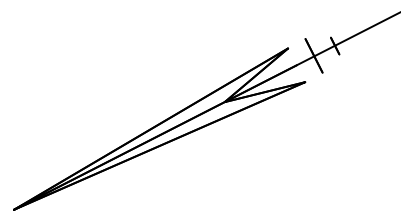


2e etage

0m 5m 10m

Schaal 1 : 200


 = Gemeenschappelijk
Tekening bestaat uit 8 bladen
Blad 4

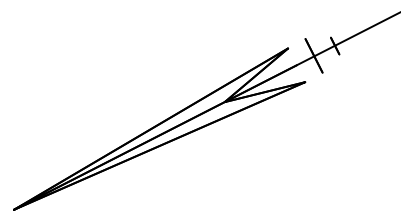


3e etage

0m 5m 10m

Schaal 1 : 200

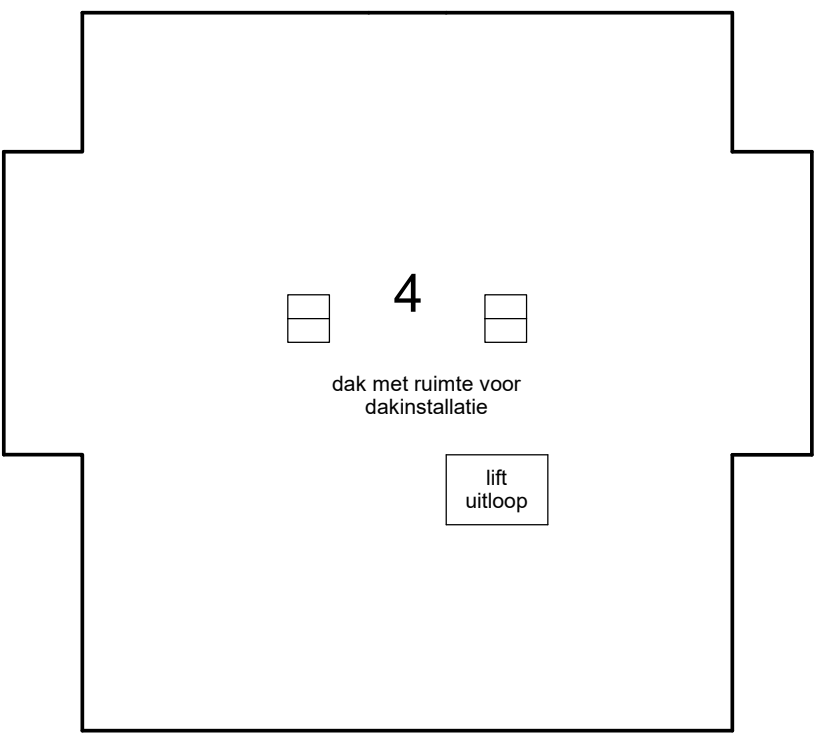
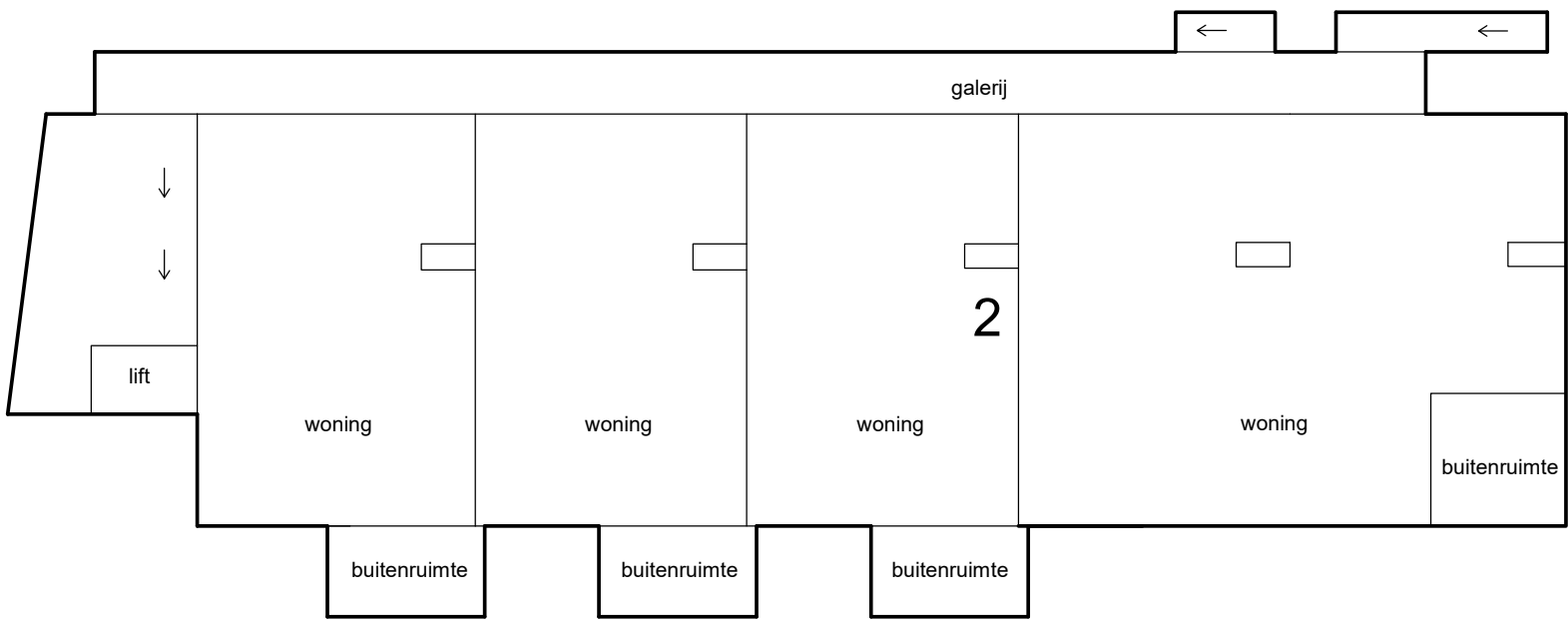
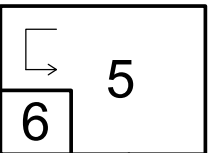
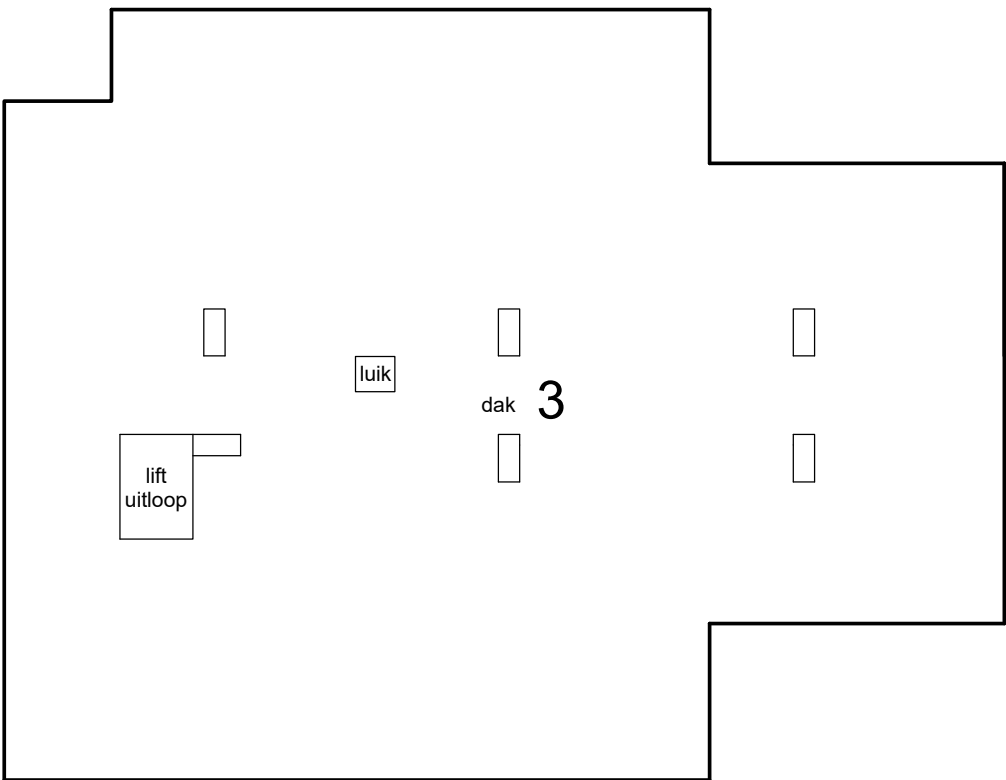
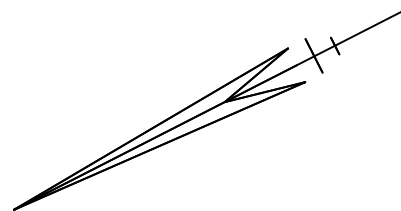
 = Gemeenschappelijk
Tekening bestaat uit 8 bladen
Blad 5



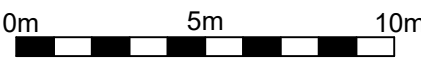
4e etage

0m 5m 10m

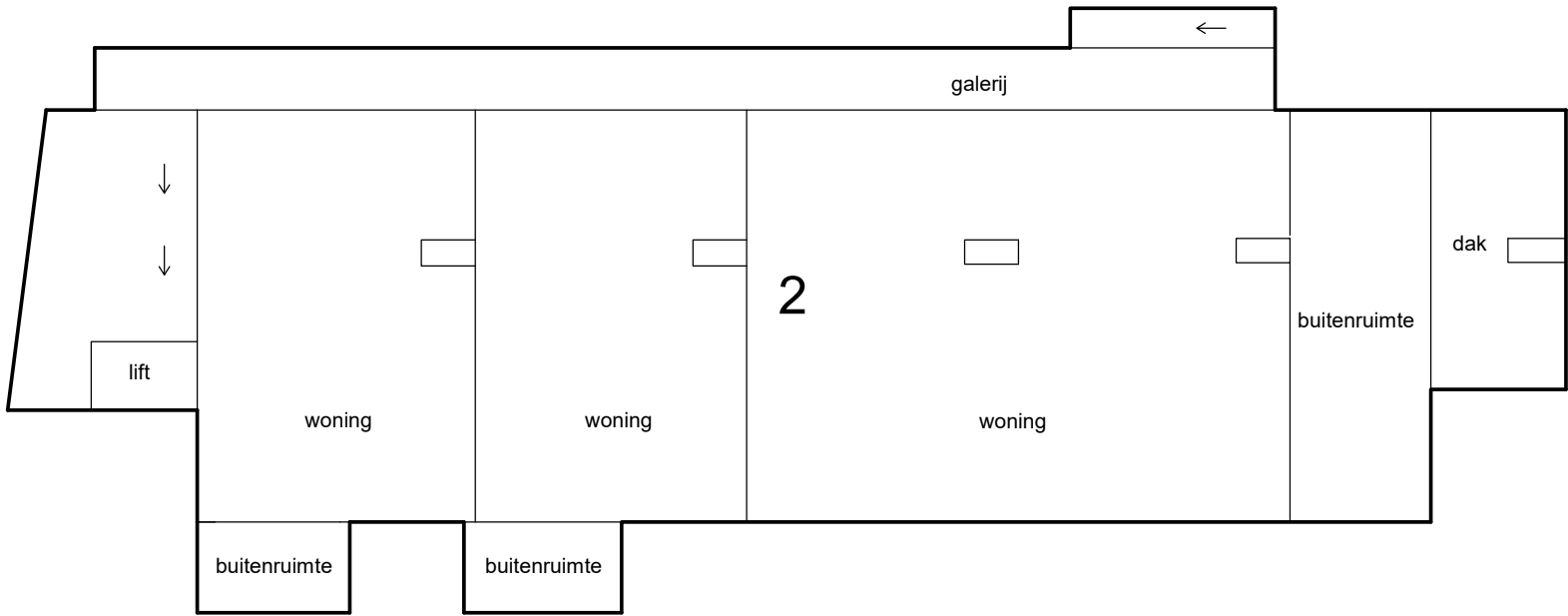
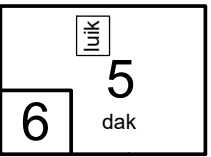
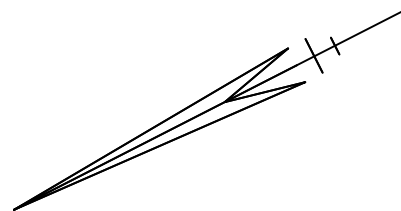
Schaal 1 : 200
= Gemeenschappelijk
Tekening bestaat uit 8 bladen
Blad 6



5e etage



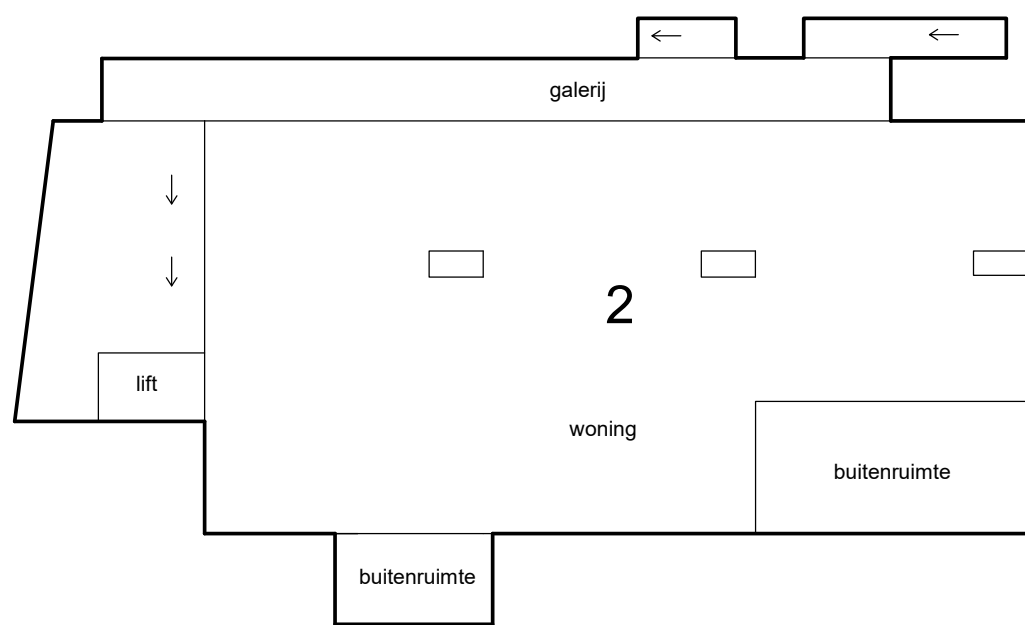
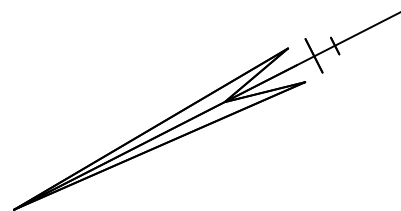
Schaal 1 : 200
= Gemeenschappelijk
Tekening bestaat uit 8 bladen
Blad 7



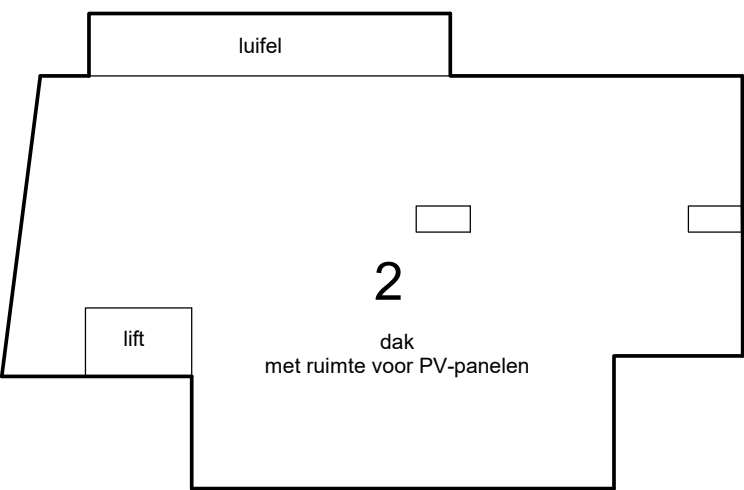
6e etage



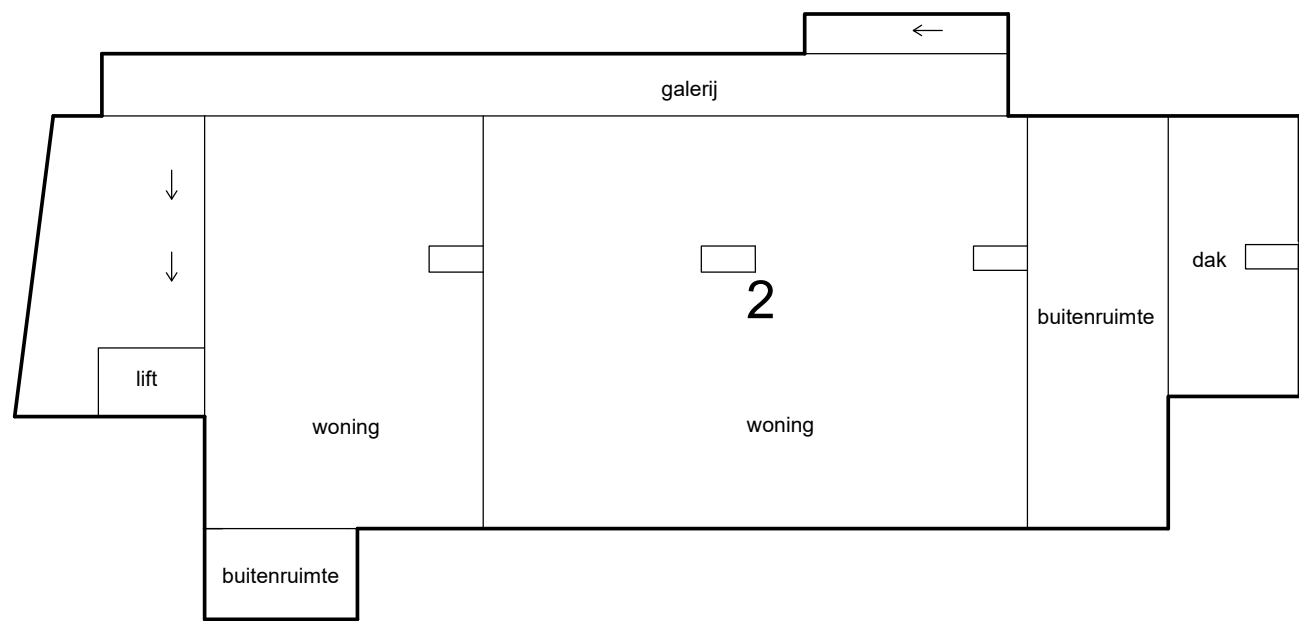
Schaal 1 : 200
= Gemeenschappelijk
Tekening bestaat uit 8 bladen
Blad 8



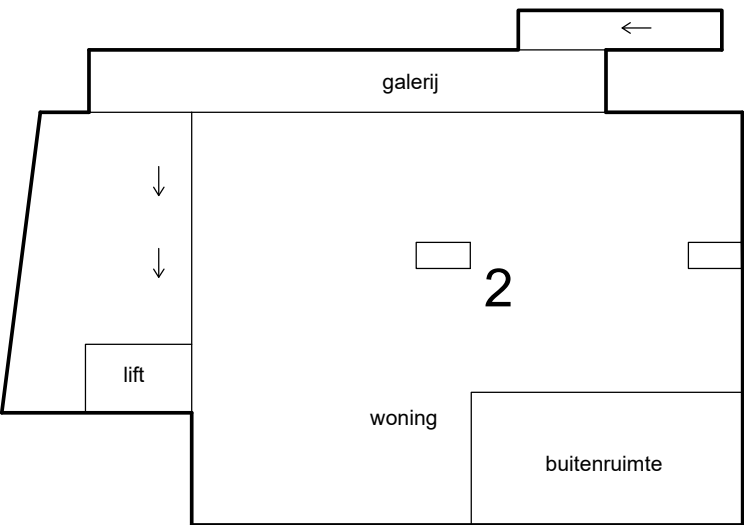
9e etage



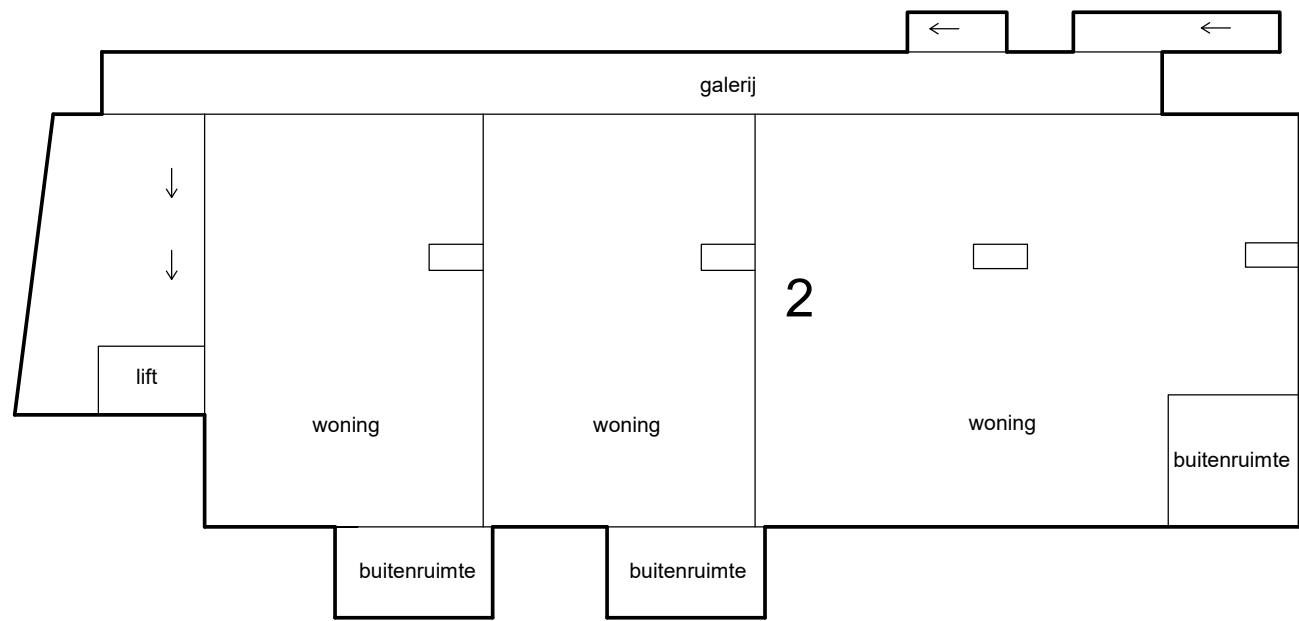
dak



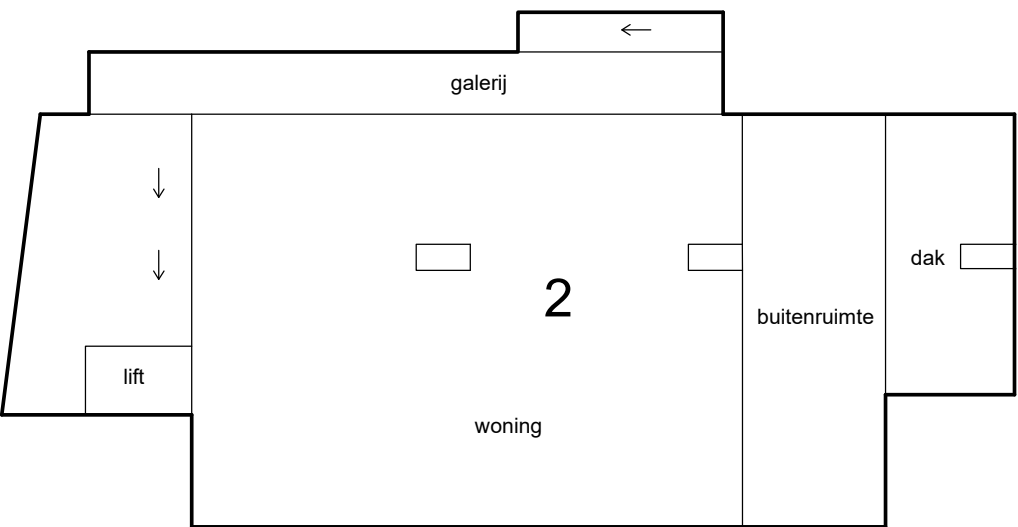
8e etage



11e etage



7e etage



10e etage

